

Thank you for taking part in research.

Please tell us about your experience.

You are taking part in a research study. Thank you!

Research improves health for everyone. Will you tell us more about what it was like to take part in research? We want to know about what we're doing well and things we can do to make taking part in research better.

You don't have to answer these questions. You won't be asked for your name or personal details. Anything you say will be kept private and no one will know which answers are yours.

This survey is for **ages 7 to 11**

You can also complete this survey online at: www.bit.ly/PRESNT7-11

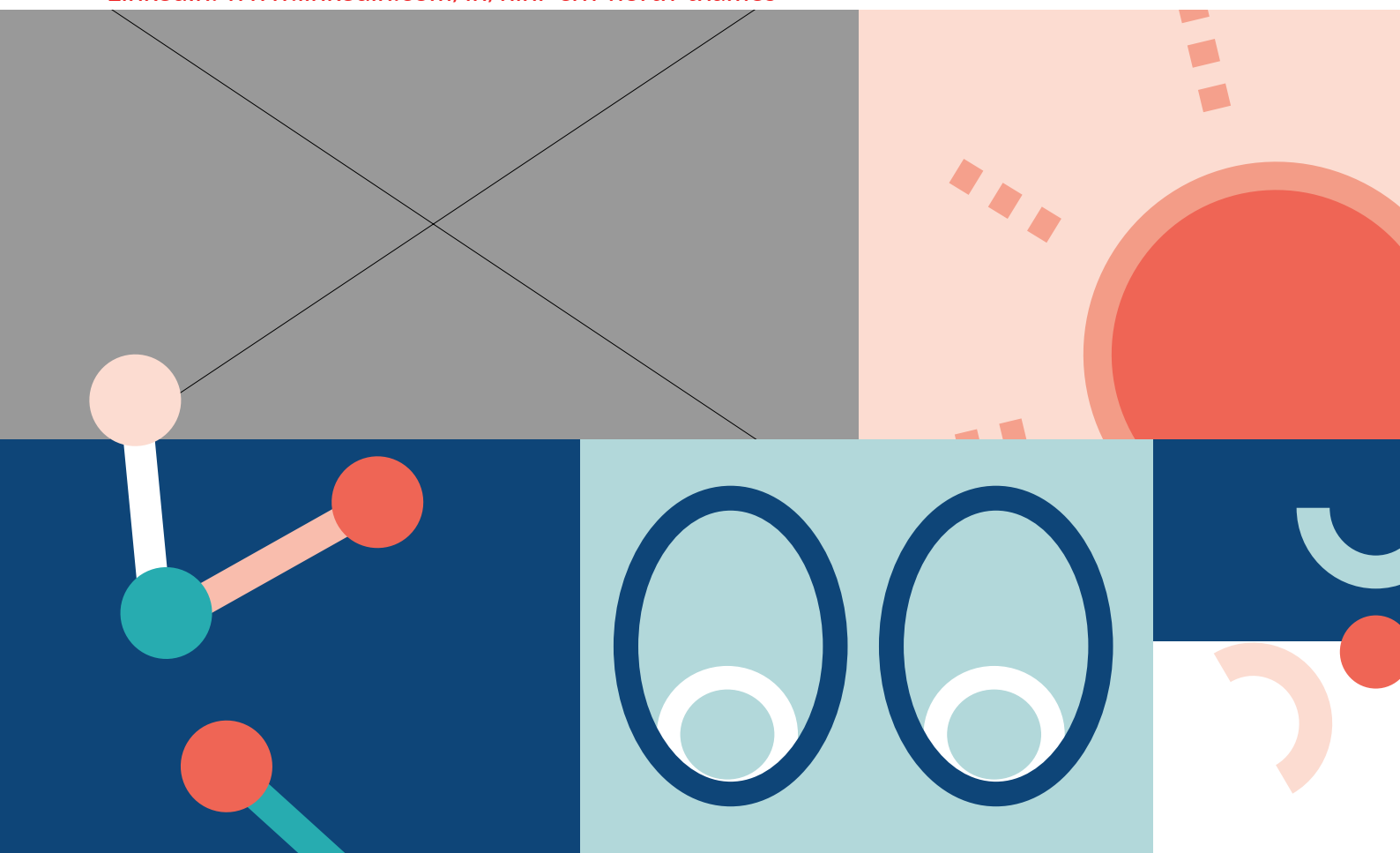
For more information;

E mail: christine.menzies@nihr.ac.uk

Web site: www.local.nihr.ac.uk/nthames

Twitter: [@NIHRCRN_nthames](https://twitter.com/NIHRCRN_nthames)

LinkedIn: www.linkedin.com/in/nihr-crn-north-thames



Please tick which smiley face or circle you agree with.

Was it easy or hard to understand the information you got at the start of the research?

Hard Easy I don't remember

I knew what was happening during the research

Strongly disagree Strongly agree Not sure

I know how I will get the results of the research

Yes Sort of No

I know who to talk to if I have any questions about the research

Strongly disagree Strongly agree

The research team made me feel valued

Strongly disagree Strongly agree

The research team were always nice to me

Strongly disagree Strongly agree

I would take part in research again

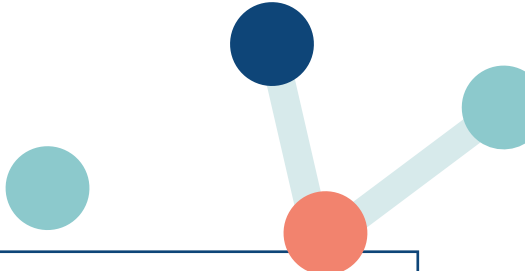
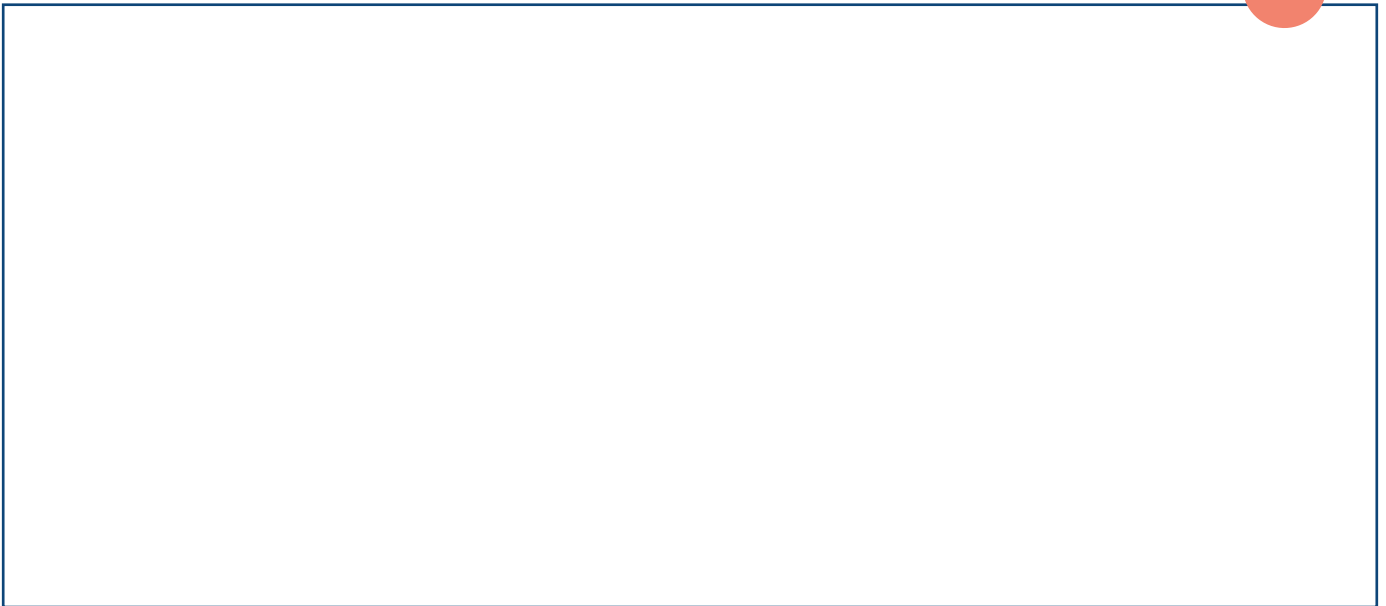
Strongly disagree Strongly agree

Is there anything else you want to say?

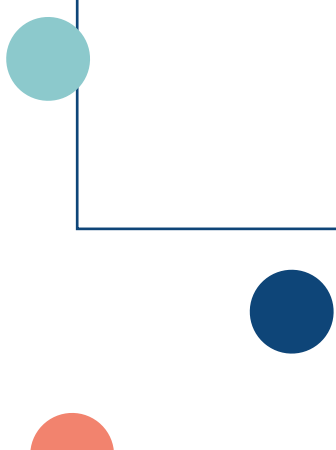
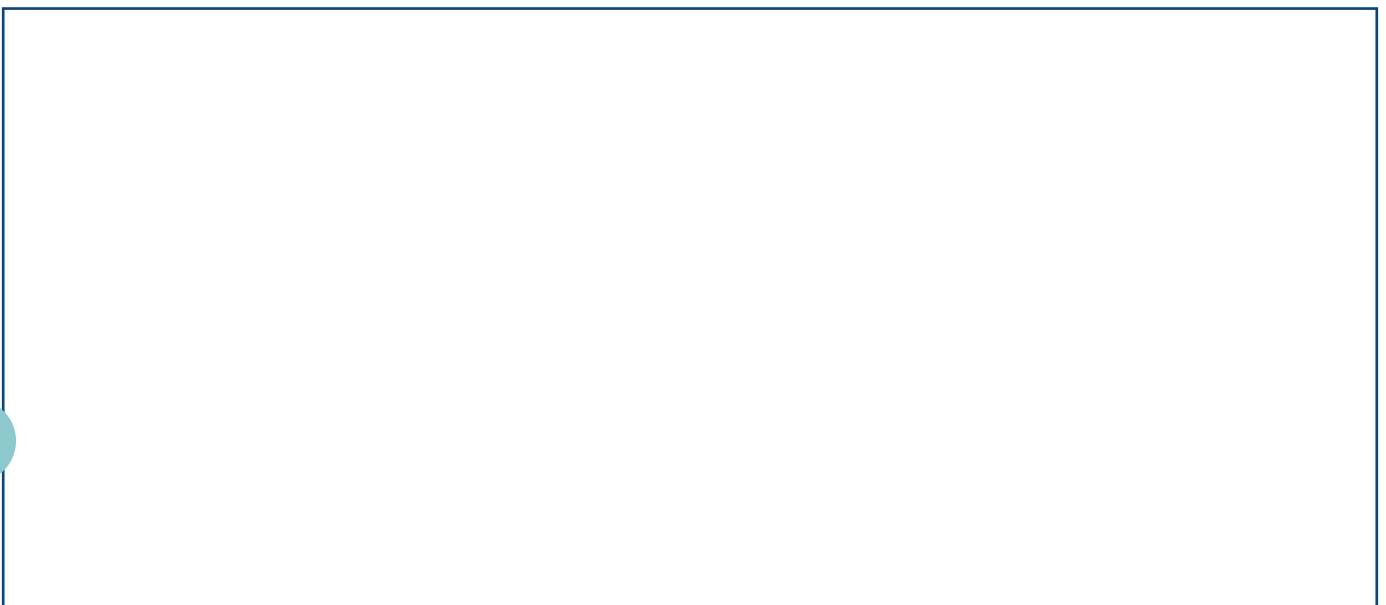
The comments that you write will be seen by the hospital and researchers. We may use your comments in reports about research, but we will remove any information that means someone might recognise you before publishing any of your feedback

The NIHR Privacy Statement can be found here:
www.nihr.ac.uk/documents/nihr-privacy-policy/12242

What did we do well?



What could we do better?



How long have you been in the research?

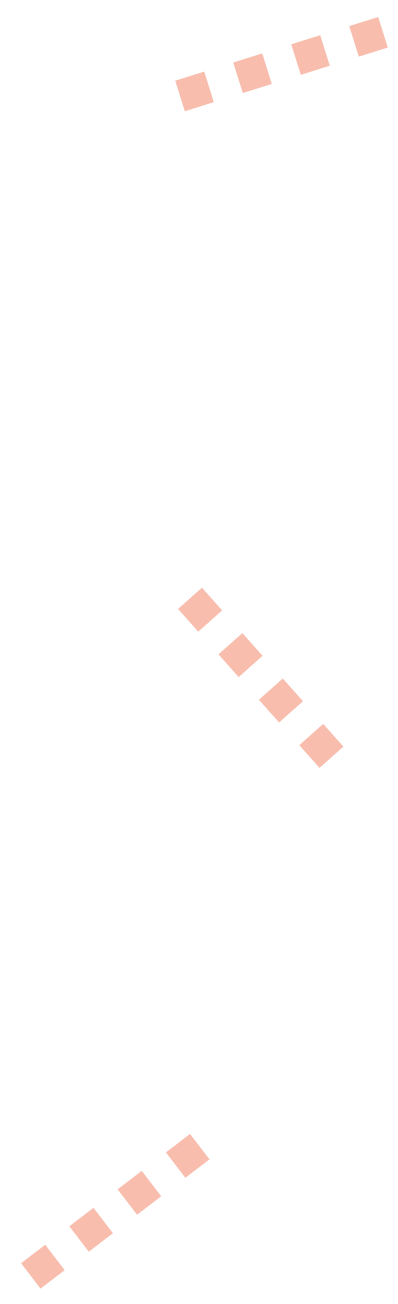
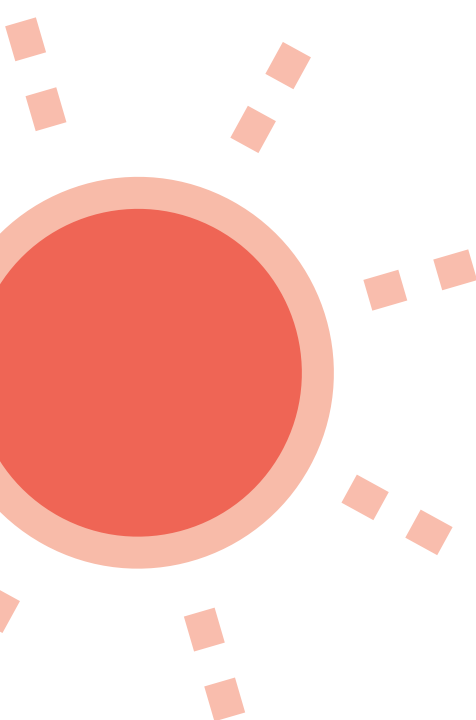
- Less than 3 months
- At least 3 months but less than 1 year
- At least 1 year but less than 3 years
- 3 years or longer
- Not sure

Is this the first research study you have taken part in?

- Yes
- No

Who is answering these questions?

- The child
- The parent or carer
- Both the child and the parent or carer together



FOR STAFF USE: Study name/acronym: _____ Research site (Hospital/GP Practice): _____ Study IRAS/CPMS Number: _____
--