

Thank you for taking part in research.

# Please tell us about your experience.

You have been asked to complete this survey because your child or a child you care for has taken part in research supported by the National Institute for Health Research (NIHR), which funds and supports research in the NHS as well as public health and social care research.

Part of the role of the NIHR is about making research better so that people who take part have the best experience possible. We would value your feedback in this survey to help us do this.

Taking part in the survey is voluntary, you do not have to fill this form in. It generally takes up to 5 minutes to complete. Your answers will be shared anonymously with local research delivery teams and with the NIHR nationally to help improve research.

This survey is for **ages 0 to 6** You can also complete this survey online at: [www.bit.ly/PRESNT0-6](http://www.bit.ly/PRESNT0-6)

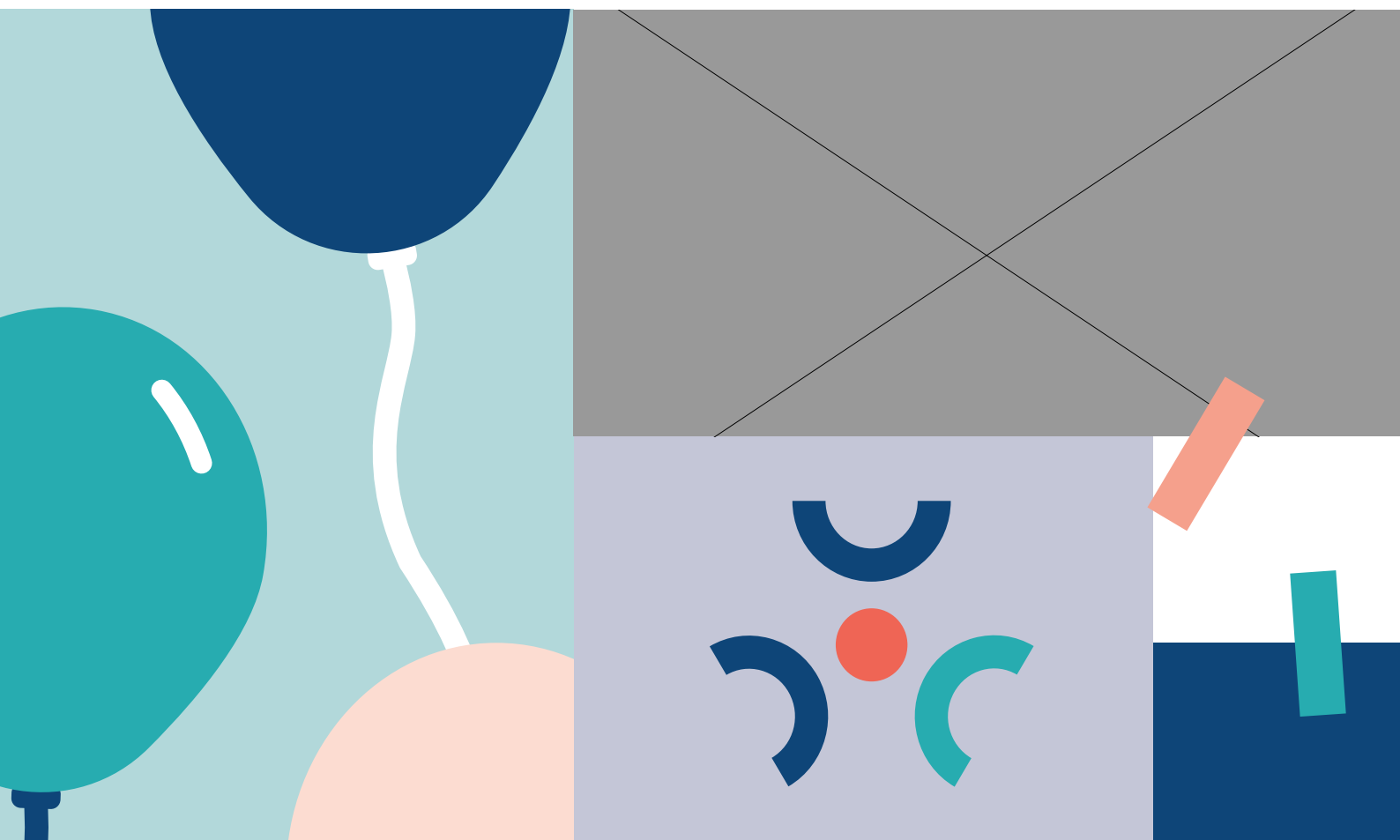
For more information;

E mail: [christine.menzies@nihr.ac.uk](mailto:christine.menzies@nihr.ac.uk)

Web site: [www.local.nihr.ac.uk/nthames](http://www.local.nihr.ac.uk/nthames)

Twitter: [@NIHRCRN\\_nthames](https://twitter.com/NIHRCRN_nthames)

LinkedIn: [www.linkedin.com/in/nihr-crn-north-thames](http://www.linkedin.com/in/nihr-crn-north-thames)



Please tick which smiley face or circle you agree with.

**The information that I received about the research when my child was invited to take part was easy for me to understand**

Hard      Easy  I don't remember

**I feel I have been kept updated about the research**

Strongly disagree      Strongly agree  It is too early to tell

**I know how I will receive the results of the research**

Yes  Yes, to some extent  No

**I know how to contact someone from the research team if I have any questions or concerns**

Strongly disagree      Strongly agree

**The researchers have valued my child taking part in the research**

Strongly disagree      Strongly agree

**Research staff always treated my child with courtesy and respect**

Strongly disagree      Strongly agree

**I would consider my child taking part in research again**

Strongly disagree      Strongly agree

Please use the boxes below to explain your answers to the above questions or provide any other feedback on your child's experience in research.

The comments that you write will be read in full by your healthcare provider and NIHR. We may use your comments in reports about research and for promotional activities, but we will remove any information that could identify you or your child before publishing any of your feedback

The NIHR Privacy Statement can be found here:  
[www.nihr.ac.uk/documents/nihr-privacy-policy/12242](http://www.nihr.ac.uk/documents/nihr-privacy-policy/12242)



**What was positive about your child's research experience?**

**What would have made your child's research experience better?**

**How long has your child been taking part in this research study?**

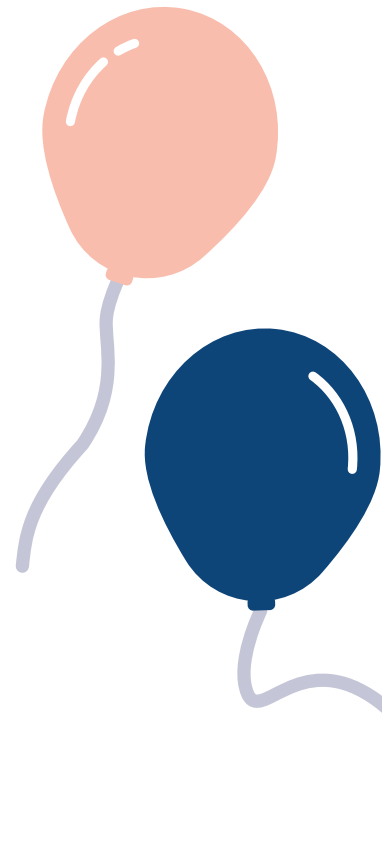
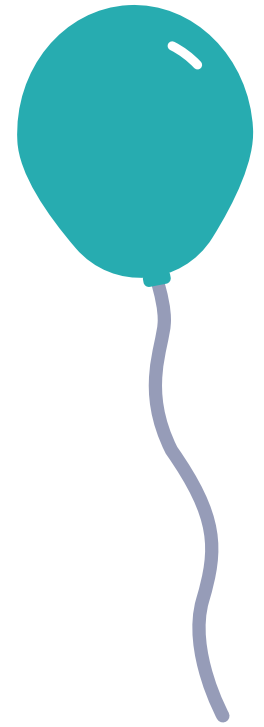
- Less than three months
- At least three months but less than one year
- At least one year but less than three years
- Three years or longer
- Not sure

**Is this the first research study your child has taken part in?**

- Yes
- No

**Who is answering these questions?**

- The child
- The parent or carer
- Both the child and the parent or carer together



FOR STAFF USE:  
Study name/acronym: \_\_\_\_\_  
Research site (Hospital/GP Practice): \_\_\_\_\_  
Study IRAS/CPMS Number: \_\_\_\_\_