

Thank you for taking part in research.

Please tell us about your experience.

You have been asked to complete this survey because you have previously or are currently taking part in research supported by the National Institute for Health Research (NIHR), which funds and supports research in the NHS as well as public health and social care research.

Part of the role of the NIHR is about making research better so that people like you who take part have the best experience possible. We would value your feedback in this survey to help us do this.

Taking part in the survey is voluntary, you do not have to fill this form in. It generally takes up to five minutes to complete. Your answers will be shared anonymously with local research delivery teams and with the NIHR nationally to help improve research.

You can also complete this survey online at: www.bit.ly/PRESNTadults

For more information;

E mail: christine.menzies@nihr.ac.uk

Web site: www.local.nihr.ac.uk/nthames

Twitter: [@NIHRCRN_nthames](https://twitter.com/NIHRCRN_nthames)

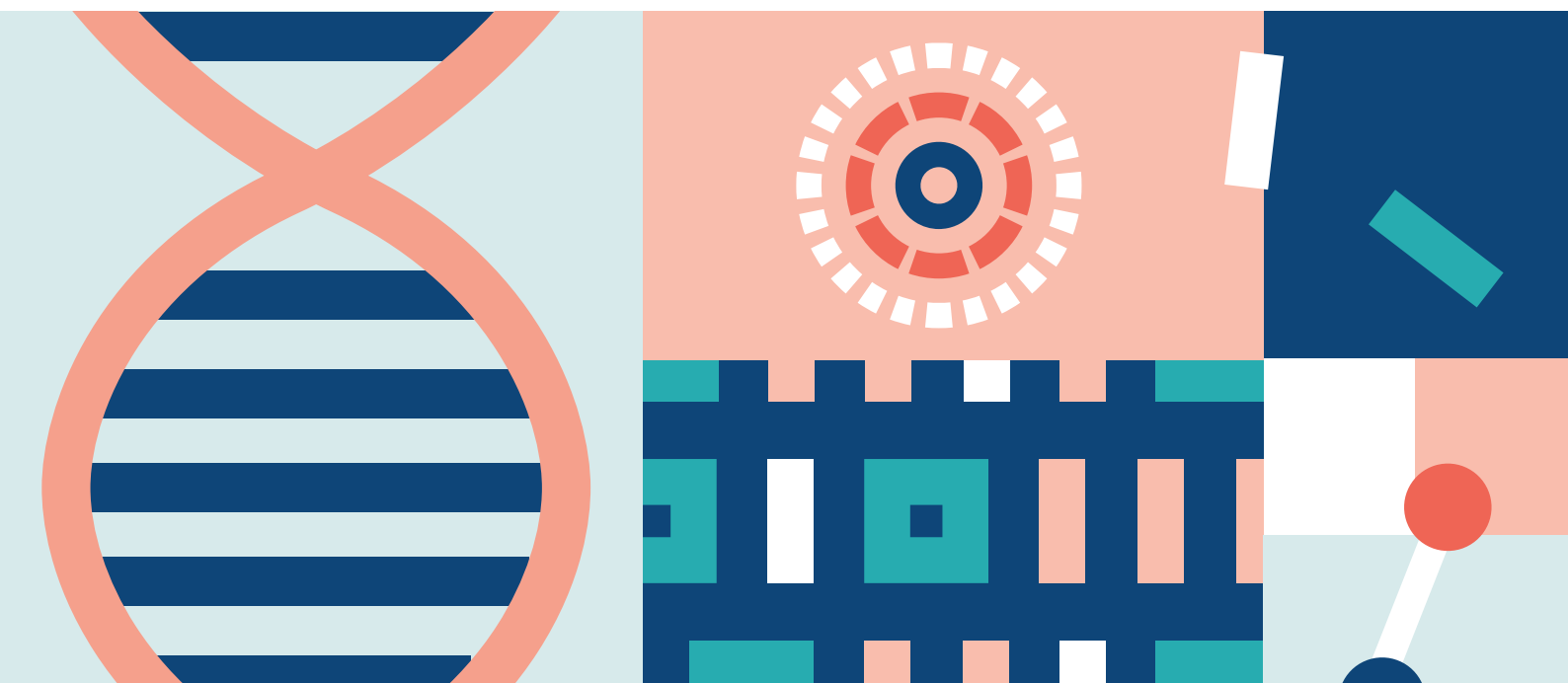
LinkedIn: www.linkedin.com/in/nihr-crn-north-thames

FOR STAFF USE:

Study name/acronym: _____

Research site (Hospital/GP Practice): _____

Study IRAS/CPMS Number: _____



Please rate how strongly you disagree or agree with the following statements about your research experience by ticking the face or circle that matches your answer best.

The information that I received before taking part prepared me for my experience on the study

Strongly disagree      Strongly agree I don't remember

I feel I have been kept updated about the research

Strongly disagree      Strongly agree It is too early to tell

I know how I will receive the results of the research

Yes Yes, to some extent No

I know how to contact someone from the research team if I have any questions or concerns

Strongly disagree      Strongly agree

The researchers have valued my taking part in the research

Strongly disagree      Strongly agree

Research staff have always treated me with courtesy and respect

Strongly disagree      Strongly agree

I would consider taking part in research again

Strongly disagree      Strongly agree

Please use the boxes below to explain your answers to the above questions or provide any other feedback on your experience in research.

The comments that you write will be read in full by your healthcare provider and NIHR. We may use your comments in reports about research and for promotional activities, but we will remove any information that could identify you before publishing any of your feedback.

The NIHR Privacy Statement can be found here:
www.nihr.ac.uk/documents/nihr-privacy-policy/12242

What was positive about your research experience?

What would have made your research experience better?

How long have you been taking part in this research study?

- Less than three months
- At least three months but less than one year
- At least one year but less than three years
- Three years or longer
- Not sure

Is this the first research study you have taken part in?

- Yes
- No

Who completed the survey?

- The person taking part in the research
- The person taking part in the research with someone else
- Someone else on behalf of the person taking part in the research

More about you.

The following questions help us to understand if any groups of people are having worse or better experiences of research than others. Knowing this helps us take action to make sure everyone has the same quality of experience when they take part in research. These questions are all optional, you do not have to answer them. The answers you give will be managed in the same way as the other information you share in this survey.

What was your year of birth?

Please write in - eg 1964

_____ Prefer not to say

What is your ethnic group?

Choose one section from A to E, then tick the appropriate circle to indicate your ethnic group.

A. Asian or Asian British

Indian

Pakistani

Bangladeshi

Any other Asian background

B. Black or Black British

Caribbean

African

Any other Black background

C. Mixed

White and Black Caribbean

White and Black African

White and Asian

Any other mixed background

D. White

British

Irish

Any other White background

E. Other Ethnic Groups

Chinese

Any other, please write in:

Prefer not to say